



Bradley &amp; cauldrons (photo by Anne Fab):

## Dear Friends,

As I write this report we are still in Lockdown for Covid 19. The museums are closed and we have no plans for On the Verandah concerts this summer. It would be great to organize some at the last minute if outdoor concerts are allowed!

The museum staff have organized online programmes for classes and we are providing funds for at least one class per school to enjoy these activities. This will continue through the fall.

<https://culture.mississauga.ca/content/virtual-school-programs>

Our annual meeting was held on Zoom with a great turnout and we had a superb presentation about the Making of the Museum at Benares by Annemarie Hagan. Many of you remember Annemarie as the first director at Benares and then for all the Mississauga Museums until 2014.

Friends would like to welcome two new board members: Tanya Caruana and Wendy Davies who is returning to the board.

We applied for and received two generous grants from the Community Foundation of Mississauga. One grant is for Halloween Harvest at the Bradley Museum. Plans are underway and we hope that the grounds and buildings will be open. The staff have organized amazing programmes online and through apps but we hope to have in person visiting soon. The other grant is for the Children and Youth Illustrated Poetry Anthology which will be organized by The New Youth Council with our help.

Memberships are only \$10 for an individual and it is helping with everyday expenses. Our fiscal year is January to December so we hope you will join us!! Stay Positive!

Take care! Stay safe!

**Liz Durdan - Chair**

## In This Issue:



Recap: Fall 2020



Neon animals  
(Walks of Art)



We are Resilient



Innovative Virtual  
Speaker Series  
...and more



# RECAP FROM: FALL OF 2020

All of us who live in Mississauga are aware that we have been in and out of various levels of lockdown for months. This has led to some very creative thinking and programming on the part of Museum staff.

Halloween Harvest took place October 31, 2020 at the Bradley Museum. Groups of small, local households visited activity stations for a safe, outdoor experience.

Visitors enjoyed old fashioned Halloween and harvest traditions. This event was a timed, booked visit and followed COVID Safety Protocol.



Park Your Pumpkin returned November 1, 2020 at the Bradley Museum.

Pumpkins were dropped off for their last hurrah! A limited number of booked guests wandered a pumpkin lit path while enjoying spooky music. All pumpkins were recycled at the end of the evening.

We look forward to the return of Park Your Pumpkin November 1, 2021.



# RECAP FROM: FEB-MAR 2021



The Bradley Museum participated in a unique new City program called Walks of Art.

These were safe, self guided tours.

A Neon Wildlife Walk was installed at the Bradley Museum.

While on a stroll around the Bradley Museum guests looked for neon lights shaped like local wildlife. This event included a nature trivia challenge for all ages.



Guests could play the game on the GooseChase app using a code or download a clue sheet to guide their walk.

## Maple Sap to Syrup Walk - Bradley Museum

Guests learned how sap from maple trees is transformed into sweet maple syrup as they explored the Bradley Museum site in a series of safe, family friendly challenges.

Here also they could play the game using the GooseChase app or download a clue sheet to guide their walk.



# ONLINE ACCESS TO MUSEUMS COLLECTIONS

Although our sites are closed to the public, collections staff have been very busy continuing to care for our artifact and archival collection. Part of our mandate is to make the collections accessible to the public which we do by uploading records to our online gallery - <https://mississauga.pastperfectonline.com/>. Most museums, ours included, only have a small percentage of their collection on display at one time. Having an online presence means locals and people from around the world can access our amazing history.

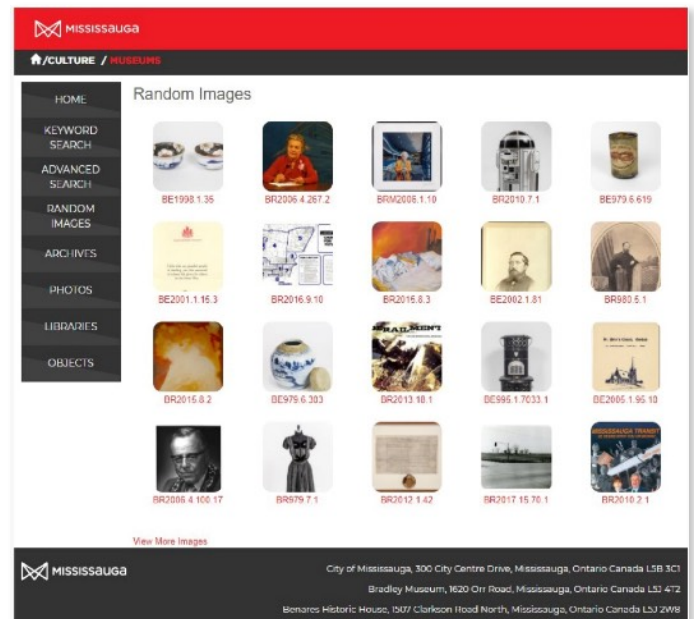
This gallery is part of the web edition for our content management system, *Past Perfect*, which allows us to easily publish information and images about what we have. Currently, there are over 500 items to view today with new ones added each year. We hope in time to have at least 75% of our collection accessible in the future.

In 2020 photographer, *Toni Hafkenscheid* was hired to photograph close to 400 artifacts in our collection. These photographs, along with continued digitization efforts of staff, contribute to our goals and help improve image quality.

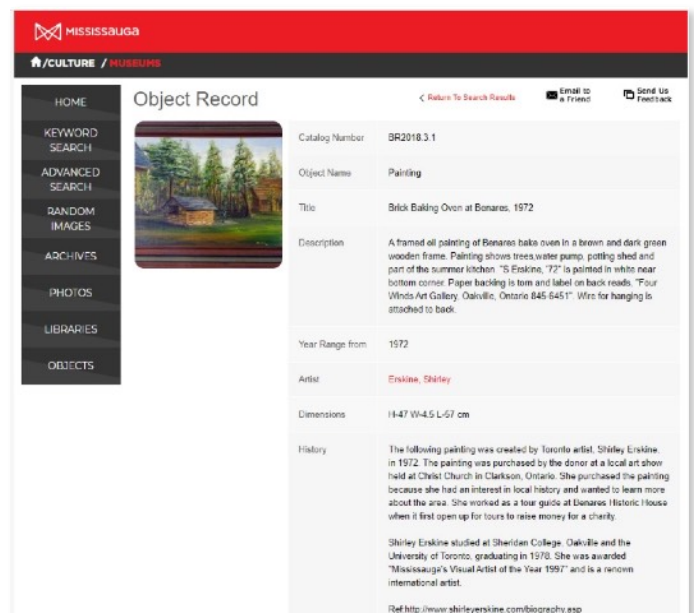
Along with this gallery, we have also shared content and images of our treasures on our various social media channels on [Twitter](#) and [Facebook](#).

If you have any questions about our online gallery please free to reach out to us at [museums.collections@mississauga.ca](mailto:museums.collections@mississauga.ca)

*Tracy Oliveira, Collections Assistant, Museums*



Museums of Mississauga Past Perfect Online Gallery



Example of a catalog record online



Behind the scenes of collections photography, 2020



# Virtual School Programs



The Museums of Mississauga bring heritage to life by visually narrating the early settler experience and life in the nineteenth century through to the modern era. Our school programs are designed to support the learning objectives of the Ontario curriculum at each level.

As a result of the COVID-19 pandemic, the Museums began to adapt our programs to virtual formats in the fall of 2020. Our education team wish to extend our thanks to the Friends, and in particular Joe Zammit for his input and recommendations on this process, and to Caitlin Anderson for letting us test out the program with her Brownie group. With our programs going virtual, Museums are able to provide educational services to schools and our community while keeping everyone safe. Two virtual school programs, “Black Settlers in Peel” and “Early Settler Experience” were made available on January 18, 2021. “Maple Sap to Syrup” was made available on February 22, 2021. The Museums will add two more school programs to these offerings in the fall.

Virtual school programs can be booked for a group of up to 55 students and cost \$150. Schools receive pre-recorded video content, interactive presentations with a museum educator during class time, and hands-on activity kits for each student.

Thanks to the generous support of the Friends of the Museums of Mississauga, schools in Mississauga that book a virtual school program are eligible to receive a rebate of \$150. Rebates are limited to one per school. Schools are required to pay for their program booking in advance, and will receive the rebate within 60 days of their program. Rebates apply to programs booked between January 2021 and December 2021.

Find out more about the Museums’ Virtual School Programs at:  
<https://culture.mississauga.ca/content/virtual-school-programs>

**Elizabeth Underhill**

Supervisor, Museums and Education



# Community Foundation of Mississauga Grant

Friends of the Museums of Mississauga gratefully acknowledges the 2021 financial support of the Hazel McCallion Fund for Arts, Culture and Heritage at the Community Foundation of Mississauga, a registered charitable public foundation serving the people of Mississauga. This grant will help to support the fall event: *Halloween Harvest at the Museums of Mississauga*.

Halloween Harvest at the Museums of Mississauga will be an inclusive, family-friendly celebration of Mississauga's agricultural heritage and the diverse communities that historically farmed here. It will include online, interactive virtual programs, on-site "activations" on the Bradley Museum grounds, and, if possible, limited attendance in-person tours.

Friends of the Museums are also incredibly grateful for a grant from the Smart and Caring Children and Youth Fund. This funding will help to support the publication of a book by The New Youth Council, titled, *Children and Youth Illustrated Poetry Anthology*.

This publication will be about hope, joy and resilience, and will feature poems written by elementary students and illustrated by at-risk youth in Mississauga. Through this project, children's writing will be celebrated, youth will gain skills in creative self-expression, and all participants will be recognized as important voices in our community.

The Community Foundation of Mississauga has been matching acts of caring with community needs since 2001. Working with donors and the broader community, the Foundation invests in building strong and resilient places to live, work and play. By providing effective and efficient endowment options for donors, the Foundation is creating a lasting legacy of community vitality. To find out more about the Community Foundation of Mississauga, visit the website at: <https://www.cfofm.org>



# Innovative Virtual Speaker Series



Virtual programs were created by Museum staff for More at the Museums: Maple! On March 6, the staff did a presentation for Facebook Live called Backyard Sugar Shack. Lindsay Doren shared advice on how to make maple syrup right in your own backyard. They followed that up on March 13 with Easy Maple Treats on Facebook Live. Elizabeth Underhill demonstrated how to make two simple maple syrup desserts, taffy and maple sugar candy.



March 16, the Museums presented “Urban Wildlife in Mississauga” online. Linda Dent, Education Officer with Mississauga Animal Services, gave a virtual talk about the various wildlife species that make Mississauga home. Linda separated fact from fiction as she discussed the controversial coyote and frisky fox, and shared fascinating facts about nocturnal creatures like bats, beavers, owls, skunks and raccoons. This talk also explored urban wildlife's challenges, successes and how we can all coexist harmoniously in our shared urban landscape.

On March 23, the Museums presented “Mississauga’s Historic Woodlands” online. Archivist Kyle Neill from the Region of Peel Archives gave a virtual presentation of historic materials that document the many types of native trees and plants that once grew in abundance in Mississauga. Using land records, maps, annotated survey plans and other materials dating back to the early 1800s, Kyle pointed out some areas in Mississauga where diverse trees and plants used to grow, and presented records from the 1900s that reveal the extensive deforestation that took place here.

The virtual speaker series wrapped up on April 15 with a fun cooking session. “Making Indian Desserts with Maple Syrup.” Mississauga-based artist and poet Meena Chopra shared her Canadianized version of the recipe Shahi Tukda, which featured wild blueberries instead of mangoes and maple syrup instead of simple syrup. It was delicious!

<https://culture.mississauga.ca/content/more-museums-maple>

Elizabeth Underhill

Supervisor, Museums and Education





## **Calling all Mississauga photographers and storytellers!**

### **Are you resilient?**

The effects of our changing climate are real and happening at a rapid pace. Whether it is evident or not, these changes affect everyone and we all have a role to play. How has your neighbourhood grown in the past 10 or 50 years?

What are you doing right now to take climate action? What does a resilient city of the future look like to you? We want to hear from you and need your help! Because we know that together, We Are Resilient.

We Are Resilient is an exciting new project by the Museums of Mississauga and the City of Mississauga's Environment Division. Inspired by the City's Climate Change Action Plan, We Are Resilient is a contest for community photographers and storytellers. The contest aims to connect individuals through stories and experiences about climate change. We hope to reveal the local and personal impacts of a changing climate through photography and stories, and explore how sharing personal reflections can help to shape the community's collective perspective on climate action.

Get creative! Submit your photos and stories portraying your experience with our changing climate in Mississauga. Capture actions, events, people and places. You'll be entered into a contest (April 22 - August 31, 2021) to win prizes and be featured in an upcoming outdoor exhibition in summer 2022.

Together, we will demonstrate the relevance of climate change to our daily lives and some of the ways we can and we are currently taking climate action in Mississauga. Share your climate story today. Learn more or enter the contest at [mississauga.ca/resilient](https://mississauga.ca/resilient).

Megan Wiles

Coordinator, Exhibition & Outreach, Museums of Mississauga





# On the Verandah Report

by Joyce Delves

For the second year, we regret to announce that due to COVID 19 our On the Verandah concerts at Benares Historic House will be cancelled. With continuing restrictions placed on our activities, times are too unsettled for us to organize and risk having to cancel our concerts. Gatherings of large groups (and we always hope for large groups at our concerts) are discouraged, if not forbidden and the Museums of Mississauga and Friends of the Museums will follow all guidelines closely.

Needless to say we are all missing our musical Friday evenings and we regret not being able to invite our musical groups out to entertain us. We hope that we will all return in 2022 with a great celebration and a wide variety of musician, vocalists, jazz and popular music to entertain us.

FOMM has still met its commitment to provide bussing for classes when they are able to plan visits to the Museum, but we desperately need our fund-raising activities to be able continue in the future.



# Friends AGM

BY JOYCE DELVES

My great pleasure at our 2021 Annual General Meeting earlier this month was to welcome a valued friend and former FOMM & Museum colleague, Annemarie Hagan, back to Benares to address our AGM. Annemarie's theme was "An Old House Doesn't Become a Museum Overnight". Annemarie nurtured the early development of Benares to the treasured building we see today. From 1994, when she was hired by the City of Mississauga to coordinate the restoration of Benares Historic House, until 2014, when she moved on to become Senior Curator, (History) at the Peel Art Gallery, Museum, and Archives (PAMA) in Brampton, Annemarie diligently guided the growth and renovation of the Museums of Mississauga - including not only Benares but Bradley House, the Port Credit Log Cabin located at Bradley Museum and Leslie Log House on Mississauga Road.



Annemarie led us through a detailed history of the Benares Museum and the four generations of the Harris/ Sayer family members from the early years of 1835 to 1995. The presentation was accompanied by a wide, engaging selection of historic photos, maps and written works. In 1857, the Georgian Style House was re-built after a fire. Renovations such as the covered porch and the gingerbread porch trim occurred in the 1880's. In 1969, the house and most of its contents were donated by the three great grandchildren of Captain Harris - Geoffrey Harris Sayers, Dora Sayers Caro and Barbara Sayers Larson to the Ontario Heritage Foundation /Trust to be established as a museum. Some interesting archaeological digs on the property during the restoration revealed hitherto unknown artifacts and early foundations.

Annemarie Hagan is an award - winning curator and museum professional with thirty-five years experience, twenty of them with the Museums of Mississauga. Ms Hagan has a B.A. in History and Women's Studies from University of Toronto and an M.A. in Public History from University of Waterloo. She is currently enjoying a quiet life in rural Wellington County. What a delight it was to see Annemarie "back home" and to enjoy her memories of the early days of this lovely historic home.

The Museum opened to the public in 1995 and is owned and operated by the City of Mississauga.



# THE LENGTHS WE GO: REFLECTIONS ON HAIR

This summer, the Museums of Mississauga have welcomed four graduate students from the University of Toronto's Master of Museum Studies program to curate an exhibition at Bradley Museum. Their exhibition, *The Lengths We Go: Reflections on Hair* explores how society, culture, and identity influence hair practices. Experience the evolution of North American hair trends from the 19th century to the present, and reflect on the different ways that hair is used to express oneself. Featuring discussions of iconic hairstyles and personal stories from the Mississauga community, this exhibition asks the question: what does hair mean to you? The exhibition will be available on the Museums website starting June 24. For more information, visit us at [www.culture.mississauga.ca/museums](http://www.culture.mississauga.ca/museums)

## PRESENCE

Presence is a year-long program funded by the City of Mississauga. Throughout the program, residents are invited to participate in workshops, exhibitions, and performances, to explore storytelling and uncover the city's cultural identities. The final project will be a living repository of contributed Mississauga stories. The project aims to use the city's cultural spaces to amplify young Black, Indigenous, Mixed Race and Persons of Colour creatives to share and collect cultural samples. Workshops include drawing your own comic book character, writing a television script and photography basics. To register for workshops, visit [www.presencemississauga.ca](http://www.presencemississauga.ca)

### Megan Wiles

Coordinator, Exhibition & Outreach, Museums of Mississauga

DID  
YOU?  
KNOW



Pea fowl at one time were kept as pets at Benares. This picture from the Museums of Mississauga is perhaps c 1908-1910.

IF YOU HAVE NOT RENEWED YOUR  
FRIEND'S MEMBERSHIP PLEASE DO.

## ABOUT FRIENDS OF THE MUSEUMS OF MISSISSAUGA

### VISION

An enthusiastic volunteer organization that promotes, strengthens and financially supports the Museums of Mississauga.

### MISSION

We support the preservation of our Museum Collections, Programming and Exhibits.

We raise awareness and financial support through events and sponsorship.

We channel charitable grants for the Museum.

For more information & future event dates about the Museums of Mississauga pls visit: <https://culture.mississauga.ca/museums>



### MAJOR SPONSORS AND PARTNERS:



### BOARD OF DIRECTORS

Gail Clark	Christine Batiuk
Joe Zammit	Joyce Delves
Don Harrington	Liz Durdan
Anne Fabierkiewicz	Sue Shanly
Wanda Hall	Junaid Zuberi
Sadaf Zuberi	June Newhouse
Caitlin Anderson	Tanya Caruana,
Wendy Davies	

**Other partners:** Suncor Energy, Meridian Credit Union, Pet Valu- Clarkson Crossing Plaza, Rattray Ratepayers, Whiteoaks Lorne Park Community Association.

### WE NEED YOU!

Please consider becoming a member of FOMM, volunteering, attending one of our events, becoming a sponsor or donating through Canada Helps. **We need a volunteer to be our FOMM secretary and members with computer skills. NOTE: Membership form is attached at the end**

*Stay Tuned*

for information on future interesting fundraising events.

**Website:** [www.fommississauga.com](http://www.fommississauga.com)

**Email:** [friendsofthemuseums@hotmail.com](mailto:friendsofthemuseums@hotmail.com)

**Facebook:** [fb.me/FOMMississauga](https://fb.me/FOMMississauga)

**Twitter:** [@FOMMississauga](https://twitter.com/FOMMississauga)

**Donate:** [CanadaHelps.ca/FOMM](http://CanadaHelps.ca/FOMM)

**Charity #:** 82229619 RR0001

**Address:**

1801 Lakeshore Rd. W, Unit 6, P.O. Box 52560,  
Mississauga, ON L5J 4S6



## What do Friends do?

*We are an enthusiastic volunteer organization that promotes, strengthens and financially supports the Museums of Mississauga. We fulfill our MISSION to support the preservation of our Museum Collections, Programming and Exhibits; raise awareness and financial support through events and sponsorship and channel charitable grants for the Museum. Our efforts seek to ensure the integrity of the Museums" in these activities:*

- Sponsor and volunteer at Museum events e.g. Maple Magic
- Sponsor educational programs on-site and in-school
- Fund artifact acquisition, cataloguing, conservation and preservation
- Sponsor artifact exhibits throughout Mississauga
- Host "On the Verandah" at Benares Historic House
- Fund busing for students to all Museums sites
- Host Fund-Raising activities e.g. Gala, Garden Party, Receptions
- Host Photos with Santa for Pets and Families

## Benefits of Friends Membership:

- Friends E-News keeps you up-to-date with Museums and Friends
- Programs and activities exclusive to Members
- Enjoy learning at the Museums in unique volunteer opportunities
- One vote per member at AGM

***To become a Member of Friends of the Museums of Mississauga,  
just complete the form and make your donation!***

## Friends of the Museums of Mississauga Annual Membership

☐ Individual (\$10)      ☐ Family/ Business (\$30)

☐ Donation \$ \_\_\_\_\_

Name: \_\_\_\_\_

Email: \_\_\_\_\_

Address: \_\_\_\_\_

\_\_\_\_\_

\_\_\_\_\_

'phone: \_\_\_\_\_

This information is collected under Freedom of Information and Protection of Privacy Act so that we may keep you informed and aware of activities of Friends of the Museums of Mississauga organization, and to determine and facilitate your donations or payment of fees. We do not rent, sell or trade this information with outside organizations.

Friends of the Museums of Mississauga is a Registered Charity #82229619 RR0001.

Please make cheques payable to:  
Friends of the Museums of Mississauga  
**Return your completed form with payment to:**

Friends of the Museums of Mississauga  
P.O. Box 52560  
1801 Lakeshore Road West, Unit 6  
Mississauga, ON, L5J 4S4

*Charitable Donation Receipts are issued  
for \$30.00 and over.*

*To donate on-line for an immediate receipt  
please go to:*

[https://www.canadahelps.org/en/charities/  
friends-of-the-museums-of-mississauga/](https://www.canadahelps.org/en/charities/friends-of-the-museums-of-mississauga/)

## Contact details:

Website: [www.fommississauga.com](http://www.fommississauga.com)

Email: [friendsofthemuseums@hotmail.com](mailto:friendsofthemuseums@hotmail.com)