

From the Editor

*This first volume in our second year of publishing the Friends of the Museums of Mississauga electronic newsletter: E-News includes reports about Friends activities over the Christmas season and early in 2015, along with a summary of volunteer involvement in 2014. The early details about our **16th annual Gala** are here so **Save the Date, June 4th**, and plan to attend this delightful fund-raising event in support of all the Museums programming and events.*

We welcome Marnie Mandel and Stuart Keeler to the Museums staff, and wish them much success in their new roles.

All the details for Maple Magic (March 14 to 22) are here. Collections Acquisitions 101 explains how to donate items to the Museums artifact collection. And there is information about current and up-coming exhibits and programs at all three Museums sites.

Thanks for your support! We hope you find E-News to be an informative and enjoyable read. Let us know what you think!

In this Issue:

Friends Website Launch

Charitable Donation Receipts for 2014

16th annual Gala - Save the Date: June 4, 2015

Photos with Santa

2014 by the Numbers

Friends and Sponsors Brunch

Introducing Marnie Mandel - Collections Outreach Coordinator

Welcome Stuart Keeler – Manager and Chief Curator, Museums of Mississauga

Collections Acquisitions 101

Pat Bond Train Derailment Collection Purchase

Maple Magic

OUR BOYS Exhibit

Friends Membership

CALENDAR

Friends Board of Directors Meeting **Mon, Mar 09**
5:45 p.m. at The Anchorage

Maple Magic **Sat, Mar 14**
to Sun, Mar 22
Weekends: 10:00 A.M. to 4:00 P.M.
Weekdays: 12:00 Noon to 4:00 P.M.
Bradley Museum

Friends Board of Directors Meeting **Mon, Apr 13**
5:45 p.m. at The Anchorage

Friends Board of Directors Meeting **Mon, May 11**
5:45 p.m. at The Anchorage

Friends 16th Annual Fund-Raising Gala **Thu, Jun 04**
Holcim Waterfront Estate



Friends membership is renewed each year.

Remember to complete the form (last page of this E-News), and send in your fee right away!

Thank You for Being a Good Friend!

Friends Website Launch: Check us out at fommississauga.com!

The website has all the latest information about Friends activities, and what's happening at the Museums, plus all the previous editions *E-News*. Your feedback will be welcome – use the CONTACT US page on the website to let us know what you think about it, and provide your ideas for additions!

Our thanks to Jeremy Harvey for his generous help in making this website a reality.



Follow @FOMMississauga for breaking news about what's happening at the Museums!

Charitable Donation Receipts for 2014

Friends of the Museums of Mississauga issues charitable donation receipts for income tax purposes throughout the year. Generally, receipts are sent by email PDF for donations of \$30.00 or more, within 3 months of the donation. Because of the added costs for materials, labour and postage, Canada Post is only used if an email address is not provided.

If a receipt for a donation made in 2014 is outstanding to you, please advise us of the discrepancy. You may leave a message at the Museums (905-615-4860 x2110). Your on-going generous contributions are essential to continuing and growing our work. We want to ensure that you receive your charitable donation receipts promptly.



Over the past 15 years, the Friends of the Museums of Mississauga Starlight & Candlelight Galas were held in February and while the Gala was a lovely and very successful event, we all agree – **February is cold!!** Time to warm things up!! The Friends are pleased to be hosting their 16th Gala in warmer weather when our guests can shed their winter coats, hats and boots. On Thursday, June 4, 2015, as the days grow longer, Gala guests will spend an evening walking the manicured grounds of the entire Holcim Waterfront Estate, delight in the beauty of Lake Ontario, stroll through the historic Harding House and enjoy fine dining in the impressive outdoor tent!

While the final details for the Museum Gala are not currently available, we hope you will **SAVE THE DATE of Thursday, June 4, 2015** in your calendars because it will be a night to remember! Invitations with final details will be mailed in March. Last year's Gala sold out quickly. Order and pay for your tickets before March 31st and receive \$10 off per ticket. Save \$80 on a table for eight!! Tickets are \$150.00 each and seating is limited. Cheques are payable to "The Friends of the Museums of Mississauga" mailed to the above address. See you at the Gala and thank you for supporting the Friends of the Museums of Mississauga. – that's what Friends are for!

Photos with Santa is our final fund-raising effort each year. The addition of Leslie Log House on the last weekend in November just made the whole event even more successful in 2014. Many new families came out to have their photos taken with Santa in the unique rustic setting. At Bradley Museum, several families have come every Christmas over many years. Their continuing interest and support is genuinely appreciated by the Friends, and the Museums.



The staff of Mississauga Animal Services were delighted to pose with a most unique pet who visited with Santa on December 6 in the Log Cabin at Bradley Museum: a miniature horse!



Here are the Museums staff, Friends volunteers and our wonderful photographer, along with Santa and Mrs. Claus on December 7.

2014 Results by the Numbers

Sponsorship

Funds and goods contributed by individuals, corporations and charitable foundations. (Excludes Friends fund-raising.)

\$ 32,425.00 cash
900.00 in goods

Total events attendance

Sum of attendance at all Museums events in the year.

7,795 people

Volunteers

Number of individuals who donated their time on behalf of Museums collections and events, plus Friends activities.

120 people

Total volunteer time

Sum of all recorded hours contributed by all volunteers in the year.

4,825 hours

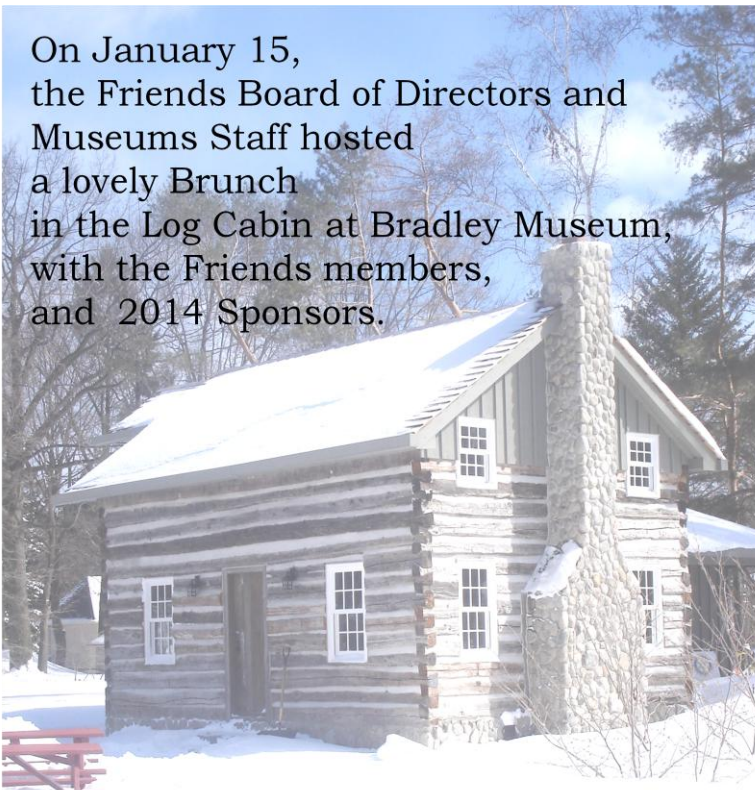
The Friends Board of Directors along with all the Museums staff extends our most sincere thanks for every sponsorship donation, and every hour of volunteer time given.

The success of every event depends on these generous contributions from all of you.

2014 Sponsors

Dr. Tyler Kong - Chiropractor
Evergreen Retirement Community
Fran Goddu
Holcim (Canada) Inc.
JHA Consult Inc.
Lance & Tamara Pope
La Villa Bakery
Meridian Credit Union
Michael's Back Door
Pet Valu Clarkson
Port Credit Community Foundation
Suncor Energy
The Hazel McCallion Fund for Arts,
Culture and Heritage, of
the Community Foundation of
Mississauga
Walden Circle Retirement Community

On January 15,
the Friends Board of Directors and
Museums Staff hosted
a lovely Brunch
in the Log Cabin at Bradley Museum,
with the Friends members,
and 2014 Sponsors.



A very special THANK YOU to
Joyce Delves, Christine Batiuk and
Kelly Kubik for a most enjoyable morning!

Introducing Marnie Mandel, Collections Outreach Coordinator at the Museums of Mississauga

by Stephanie Meeuwse, Collections & Exhibit Supervisor, Museums of Mississauga



Marnie Mandel is the new Collections Outreach Coordinator at the Museums of Mississauga. Her duties include creating and installing outreach exhibits, assisting with in-house exhibits and creating on-line displays and podcasts. Marnie will also be working with the Museums Manager and the Collections and Exhibit Supervisor to develop a strategy for soliciting donations from community groups and businesses. Due to a lack of staff resources and space limitations, until recently, we only collected passively. With our access to storage space at Armstrong Fine Arts Storage and the implementation of Marnie's new position, we plan to change that. New acquisitions will be focused on our collecting mandate of 1939 to the

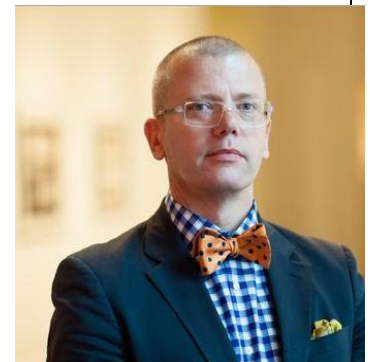
present. We hope to get some items that reflect the diversity of Mississauga and our rich economic base. Marnie has a strong exhibition development background, proven public speaking experience and is very savvy in the digital arts. We are pleased to have her unique skills that will complement those of our existing Collections staff.

Welcome Stuart Keeler, Manager and Chief Curator for the Museums of Mississauga!

Announcement from Paul Damaso, Director (Acting), Culture Division

I am very pleased to announce the appointment of Stuart Keeler as the new Manager and Chief Curator for the Museums of Mississauga within the Culture Division. Many of you will know Stuart from his incredible work with transforming the Art Gallery of Mississauga into one of Mississauga's leading Cultural Institutions. In addition to his successful roles as a Cultural Administrator, Stuart is also an award winning cultural producer with broad international experience in curating, programming, writing, and community engagement.

We are thrilled to bring his considerable talent, experience, creativity and vision to our team. I know that you'll join me in welcoming Stuart to the City of Mississauga and to this important new role with the Culture Division.





What's Happening during Maple Magic at Bradley Museum

Everyday March 14 to 22	Pancakes + Real Maple Syrup in the Log Cabin (\$5 + tax per serving)	All activities and entertainment included free with admission, except horse and wagon rides (\$2 each) <ul style="list-style-type: none"> • Learn how to tap a maple tree • Guided tours of the sap line, including First Nations, Pioneer and modern methods of making maple syrup • Demonstrations in historic Bradley House • Children's crafts and games • "Our Boys" Exhibit in the Anchorage • Over sized games to play with outside
Weekdays Noon to 4 pm	Free tastes of maple on the sap line tours!	
Weekends 10 am to 4 pm	BBQ by the Museums of Mississauga Unique Maple Products for Sale in the Gift Shop.	
Sat., March 14 10 am to 4 pm	Friends of the Museums volunteers serve pancakes in the Log Cabin	<ul style="list-style-type: none"> • Wood Carving by Jim Menken • Mississaugas of the New Credit
Sun., March 15 10 am to 4 pm	Museums staff and volunteers serve pancakes in the Log Cabin	<ul style="list-style-type: none"> • Mississaugas of the New Credit • Big Games in the main field
Mon., March 16 Noon to 4 pm	Museums staff and volunteers serve pancakes in the Log Cabin	<ul style="list-style-type: none"> • Music by Alana Kline • Mississauga Library Story Time
Tue., March 17 Noon to 4 pm	Holcim (Canada) Inc. volunteers serve pancakes in the Log Cabin.	<ul style="list-style-type: none"> • Canadian Peregrine Falcon demonstrations • Big Games in the main field • Historic Games in the Anchorage

What's Happening during Maple Magic at Bradley Museum

Wed., March 18 Noon to 4 pm	Museums staff and volunteers serve pancakes in the Log Cabin	<ul style="list-style-type: none"> Craft day - Mississauga Arts & Culture Team
Thu., March 19 Noon to 4 pm	Suncor Energy volunteers serve pancakes in the Log Cabin	<ul style="list-style-type: none"> Mane Attraction Petting Zoo Mississaugas of the New Credit
Fri., March 20 Noon to 4 pm	Museums staff and volunteers serve pancakes in the Log Cabin	<ul style="list-style-type: none"> Mississaugas of the New Credit
Sat., March 21 10 am to 4 pm	Museums staff and volunteers serve pancakes in the Log Cabin	<ul style="list-style-type: none"> Mississaugas of the New Credit
Sun., March 22 10 am to 4 pm	Museums staff and volunteers serve pancakes in the Log Cabin	<ul style="list-style-type: none"> Norfolk Blacksmithing demonstrations

Dress for the weather – most activities are out of doors!

Added attractions are subject to change.

Maple Magic 2015 is sponsored by:



Friends of the Museums of Mississauga Board of Directors 2014 - 2015

Gail Backus	Don Harrington (Treasurer)
Chris Batiuk	Julie Morris
Mira Coghlan	John Pegram
Jenny Dale (Secretary)	Gay Peppin
Joyce Delves (Vice-Chair)	Becky Ryder (Chair)
Fred Durdan (Past Chair)	Barb Smith
Anne Fabierkiewicz	John Van Camp

The **mission** of the Friends of the Museums of Mississauga is to engage volunteers and enhance community awareness through promotion, participation and fundraising; and to ensure the integrity of the Museums.

Book an Afternoon Tea at Bradley Museum or Benares Historic House. Enjoy a tour of the Museum with a costumed historic interpreter, then relax with tea, scones and historic sweets! For all the details go to:
http://www7.mississauga.ca/documents/culture/museums/cms_cul_AfternoonTea



Collections Acquisitions 101

The Museums of Mississauga follows a set procedure for acquiring new artifacts. In the past, collection has been passive, decisions to accept items were made on the merit of the items offered using the collecting policy and mandate. In the future, collection will be more aggressive, with the development of a strategy to actively solicit donations, and by having a dedicated staff person who will give presentations to both businesses and community groups.

Following are the steps used currently to acquire new artifacts into the collection:

- 1.) Donors contact the Museums Collections staff with items they wish to donate.
- 2.) The staff determine through a brief conversation if items relate to the criteria for acquisitions.
- 3.) Criteria for acquisition is outlined in the Collections Policy # 05-01-11
“The following criteria will be applied when acquiring objects for the Museums Collection:
 - the object represents the modern development of the City of Mississauga during the period from 1939 to the present;
 - if unrelated to the period from 1939, the material is unique and related to an aspect of Mississauga’s history;
 - in accordance with the Canadian Museums Association’s Ethical Guidelines for Museums, no illicit materials or items made from endangered materials will be acquired;
 - the object is suitable for research, exhibition and interpretation in a suitable historical context;
 - the object does not require conservation of a level or complexity that is beyond the means of Museums (an exception may be made if a donor or other source is willing to provide funding to pay for any required conservation);
 - duplicate and/or equivalent objects will not be acquired unless they have a specific function within the Museums’ programmes; and
 - the item can be properly stored.”
- 4.) Once an item is deemed suitable for acquisition, arrangements are made for pick-up or drop-off of the artifact.
- 5.) A gift form is signed by the donor and the Museums staff which legally transfers the ownership to the City of Mississauga (Museums) and all pertinent information is collected.
- 6.) Items are catalogued by Collections Volunteers and staff. This information is entered into the Past Perfect database which also includes a photograph, bar code and unique accession number.
- 7.) A charitable donation receipt for income tax purposes is issued by the City of Mississauga, for items valued over \$20.00. The Museums Collections & Exhibit Supervisor determines the value of items up to \$1,000. The donor can also arrange for an independent appraisal by a qualified expert, if the value is over \$1,000. The appraisals are verified by the Museums Manager, the Director of Culture and the Manager of Finance.

Pat Bond Mississauga Train Derailment Collection Purchase

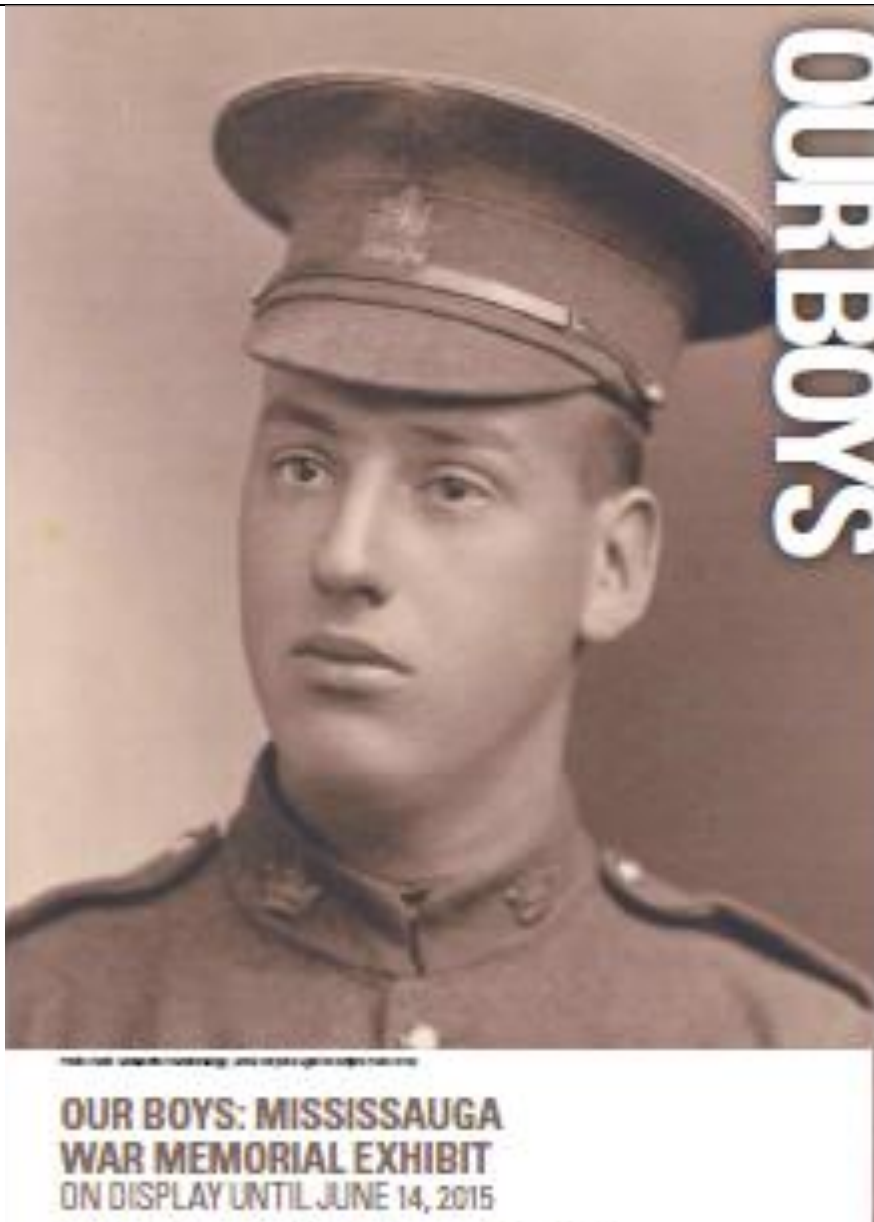


Friends of the Museums recently funded the purchase of the 21 paintings collection by local artist Pat Bond, in recognition of the former manager, Annemarie Hagan, who worked at the Museums for twenty years. These pieces complement the derailment-inspired painting by Sonja Hidas previously acquired by the Friends. The collection includes 9 additional studies, plus the artist's research notes and support materials which are pertinent to the provenance of the art pieces. These items and other related artifacts from the Museums collection will be featured in an upcoming on-line exhibit. Museums staff are currently working on this display and plan to present it at the Friends of the Museums AGM in the spring.

Here's an excerpt from Pat's letter to the Friends: *I am pleased that my art collection will have a home where it can be viewed and appreciated by all the citizens of Mississauga. I understand this collection will fit perfectly with the Museums of Mississauga's new collecting mandate to acquire items from 1939 to the present and that it will honour a long-time staff member.*

These two images are representative of the collection.

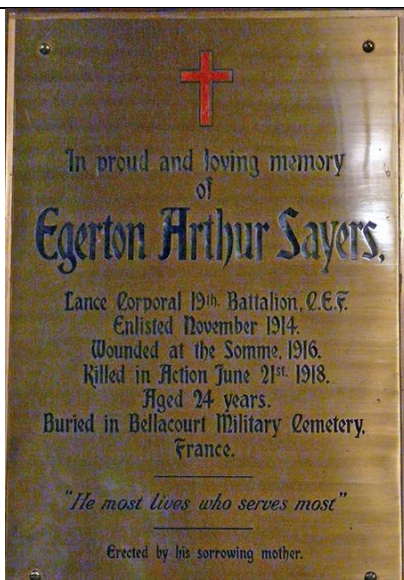




OUR BOYS is an exhibit at The Anchorage (Bradley Museum site) memorializing men of the Mississauga area who served in the armed forces during WWI.

The display was developed by the Museums in collaboration with Heritage Mississauga. It includes stories of celebration, victory, worry, and heart-rending loss.

The photo is Lance Corporal Egerton Sayers. "Edge" was the younger brother of Beverly Sayers who married Annie Harris of Benares Historic House. Egerton was killed in action 21 June 1918, north east of Boisleux, St. Marc in France.



Lance Corporal Egerton Sayers is memorialized by Veterans Affairs Canada on the Canadian Virtual War Memorial at

<http://www.veterans.gc.ca/eng/remembrance/memorials/canadian-virtual-war-memorial>.

He is commemorated on a plaque in the St. Peter's Anglican Church, Erindale – the church that the Sayers and Harris families attended.

Friends museums OF MISSISSAUGA

invite you to become a member...

What do Friends do?

We fulfill our MISSION "to engage volunteers to enhance community awareness through promotion, participation, and fund-raising; and to ensure the integrity of the Museums" in these activities:

- Host annual Fund-Raising Gala
- Sponsor educational programs on-site and in-school
- Fund artifact acquisition, cataloguing, conservation and preservation
- Sponsor artifact exhibits throughout Mississauga
- Host "On the Verandah" at Benares Historic House
- Fund busing for students to all Museums sites
- Host annual Sponsors Reception
- Host Photos with Santa for Pets and Families

Benefits of Friends Membership:

- Friends E-News keeps you up-to-date with Museums and Friends
- Programs and activities exclusive to Members
- Enjoy learning at the Museums in unique volunteer opportunities
- 20% discount at Maple Magic Gift Shop
- One vote per member at AGM

*To become a Member of Friends of the Museums of Mississauga,
just complete the form and make your donation!*

Friends of the Museums of Mississauga Membership

☐ Individual (\$10) ☐ Family (\$30) ☐ Donation \$ _____

Name: _____

Email: _____

Address: _____

'phone: _____

This information is collected under Freedom of Information and Protection of Privacy Act so that we may keep you informed and aware of activities of Friends of the Museums of Mississauga organization, and to determine and facilitate your donations or payment of fees. We do not rent, sell or trade this information with outside organizations.

Friends of the Museums of Mississauga is a Registered Charity #82229 3619 RR0001.

Please make cheques payable to:
Friends of the Museums of Mississauga
Return your completed form with payment to:

Friends of the Museums of Mississauga
P.O. Box 52560
1801 Lakeshore Road West
Unit 6
Mississauga, ON, L5J 4S4

*Charitable Donation Receipts are issued
for \$30.00 and over.*

Contact details:

'phone: 905-615-4860

Website: www.museumsofmississauga.com

Email: friendsofthemuseums@hotmail.com